

# **CEMENT FONDU**

## **VENUE HIRE**

---

## VENUE OVERVIEW

Cement Fondu is an evolving arts space located in Paddington, Sydney, on the land of the Gadigal and Bidjigal People of the Eora Nation.

We present a diverse year-round program of visual arts exhibitions that feature performance, dance and music by Australian and international artists.

Our Art Store, Project Space, online presence and program of public events aim to offer alternative and engaging ways for people to encounter artists and their practices.

Dedicated to new creative possibilities and greater understanding, we serve a collective curiosity toward each other and the matters of our time.

## EVENT SPACE

Cement Fondu is a stunning gallery and event space with polished concrete floors and soaring ceilings. It has a private foyer entry, a discreet kitchen in back of house and a mezzanine level. The space is perfect for private dinners, cocktails, networking events, workshops and launches.

In-between exhibitions, the venue is offered as a blank canvas that can be imaginatively transformed for events. During exhibitions, events take place surrounded by contemporary artworks, offering a unique and creatively inspiring multi-purpose function space.

The exhibition program revolves bi-monthly, so the venue is always changing, providing the perfect reason to come back for consecutive events. Our exhibitions feature local and internationally acclaimed multi-disciplinary artists whose works provide the perfect backdrop for your next function.

To find out more about our program and what exciting exhibition will be featured around the time of your next event, please get in touch.

## LOCATION

36 Gosbell Street, Paddington, NSW, 2021

## CONTACT

Engagement & Communications Coordinator | Hannah White  
hannah@cementfondu.org

---



TOP TO BOTTOM  
**MAIN GALLERY**  
PHOTO BY  
JESSICA MAURER  
**MEZZANINE**  
PHOTO BY  
JESSICA MAURER  
**PROJECT SPACE**  
PHOTO BY  
TIM DA-RIN



TOP TO BOTTOM  
**MAIN GALLERY**  
 PHOTO BY  
 JESSICA MAURER  
**MAIN GALLERY**  
 PHOTO BY  
 TIM DA-RIN

## AVAILABILITY

### BLANK CANVAS SPACE - BETWEEN EXHIBITIONS

Hire and transform the Cement Fondu space for a day, or across multiple days:

5 JANUARY - 28 JANUARY 2024

### DURING EXHIBITIONS

Cement Fondu is available to hire year-round during exhibitions:

7am - 12am Monday - Wednesday

5pm - 12am Thursday to Sunday

### VENUE ACCESS

### BLANK CANVAS SPACE - BETWEEN EXHIBITIONS

7am - 12am Monday to Sunday

### DURING EXHIBITIONS

7am - 12am Mondays to Wednesday

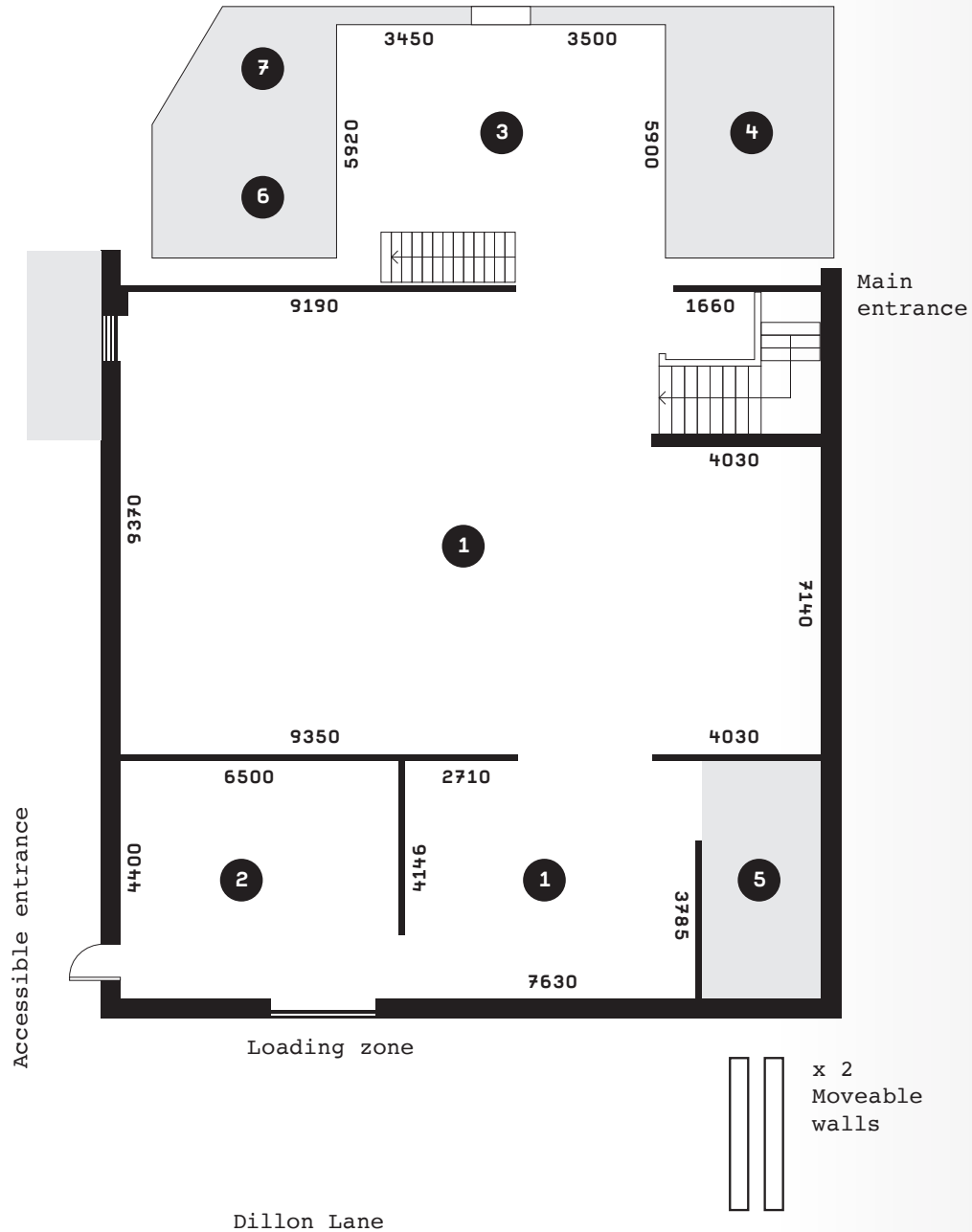
5pm - 12am Thursday to Sunday

Access for set-up is granted during these times.

Loading Bay on Dillon Lane, Paddington.

Cement Fondu is a wheelchair accessible venue with a ramp available on request via Dillon Lane.

Gosbell Street



## VENUE LAYOUT

Cement Fondu comprises of three separate spaces the Main Gallery, Project Space & Mezzanine.

1	Main Gallery	10.4 X 16M + 7.6 X 5.5M
2	Project Space	6.5 X 5.5M
3	Mezzanine	5.9 X 7M
4	Art Store	Not for rent
5	Office	Not for rent
6	Bathrooms	Available to hirer
7	Kitchen	Available to hirer

**INDOOR AREA**  
APPROX. 285 M2

**CEILING HEIGHT**  
MAIN GALLERY & PROJECT SPACE: 6.5M  
MEZZANINE: 3.5M

**CAPACITY**  
COCKTAIL 300  
SEATED 180



---

## FACILITIES & SERVICES

### VENUE FACILITIES

The Venue is equipped with the following facilities and services that are offered for free of charge:

- Air-conditioning
- Kitchen with glassware, sink, oven, microwave, dishwasher and fridge
- A/V comprising of 2 wireless microphones, 2 speakers, an amp and associated cables
- Assorted furniture
- Wi-Fi

Some items are subject to availability. The Venue is hired 'as is', and event set up is the responsibility of the hirer.

### TECHNICAL ASSISTANCE

As a part of your venue hire, Cement Fondu will provide you with an event technician who can assist with the technical requirements of your event and trouble shoot during the event.

---

## FACILITIES & SERVICES

### LOADING BAY AND RAMP ACCESS

Loading bay and ramp on:  
Dillon Lane, Paddington  
NSW 2021

Bay entry:  
height 2200mm x width 2420mm

Ramp entry:  
height 2030mm width 840mm

Longer load in times must  
be scheduled with the Venue  
Manager.

No pallet jacks or forklifts  
available. Flat-bed trolley  
provided.

### SECURITY

Dedicated security is required  
for events that serve alcohol  
at the hirer's expense.

### ALCOHOL SERVICE

The Venue is not licensed to  
sell alcohol. A caterer with  
an alcohol service licence can  
be engaged to sell alcohol,  
or alcohol can be given away  
without sale.

### WAITERS, BAR, USHERS & FRONT OF HOUSE STAFF

Hirers are welcome to engage  
external event staff. The  
following are recommended  
suppliers:

Black & White  
1300 544 686  
[blackandwhitewaiters.com.au](http://blackandwhitewaiters.com.au)

Stedmans  
9281 2433  
[info@stedmans.com](mailto:info@stedmans.com)

### PARKING

Up to 2 parking spots can be  
coordinated for hirers. The sun-  
filled outdoor carpark may also  
be used for activations after  
regular business hours and on  
weekends.

### CATERING

Hirers are welcome to engage  
external caterers.

---

TOP TO BOTTOM  
**MAIN GALLERY**  
PHOTO BY  
TIM DA-RIN  
**MAIN GALLERY**  
PHOTO BY  
JESSICA MAURER



## VENUE FEES

### HIRE: IN-BETWEEN EXHIBITIONS

This fee is for the hire of the venue for an event in-between exhibitions, meaning the hirer is provided a venue free of artworks and exhibition infrastructure.

Available dates for this hire option are limited to:

5 - 28 JANUARY, 2024

#### HALF DAY

**4 HOURS BETWEEN 7AM - 12AM**

MONDAY - SUNDAY

\$1250 (PLUS GST) PER DAY

ADDITIONAL HOURS: \$200

#### FULL DAY

**8 HOURS BETWEEN 7AM - 12AM**

MONDAY - SUNDAY

\$2500 (PLUS GST) PER DAY

\$2000 (PLUS GST) PER CONSECUTIVE DAY

ADDITIONAL HOURS: \$200

TIMES ARE INCLUSIVE OF BUMP-IN  
AND BUMP-OUT.

### HIRE: DURING EXHIBITIONS

This fee is for hire of the venue for an event outside of Gallery hours, but during exhibitions, meaning the hirer is provided a venue with artworks and exhibition infrastructure. Cement Fondu staff will advise hirers how their event can fit seamlessly within the exhibition.

#### 9AM - 5PM

MONDAY - WEDNESDAY ONLY

\$1500 (PLUS GST) PER DAY

ADDITIONAL HOURS: \$200

#### 5PM - 12AM

MONDAY - SUNDAY

\$1500 (PLUS GST) PER DAY

ADDITIONAL HOURS: \$200

TIMES ARE INCLUSIVE OF BUMP-IN  
AND BUMP-OUT.

## ADDITIONAL COSTS

### EQUIPMENT

Cement Fondu can rent a range of equipment to hirers including: TV screens, projectors, plinths, additional speakers, media players, tables, chairs and more.

Costs vary. Please get in touch to discuss your event requirements.

# CEMENT FONDU

## GET IN TOUCH

CONTACT  
ENGAGEMENT &  
COMMUNICATIONS COORDIANTOR  
HANNAH WHITE  
[HANNAH@CEMENTFONDU.ORG](mailto:HANNAH@CEMENTFONDU.ORG)